
Product Datasheet

**alpha Synuclein (Phospho-Y133) antibody
(orb393167)**

Description

Rabbit polyclonal antibody to alpha

Species/Host

Rabbit

Reactivity

Human, Mouse, Porcine, Primate, Rabbit, Rat, Sheep

Conjugation

Unconjugated

Tested Applications

IH, WB

Immunogen

KLH-conjugated synthetic phosphopeptide corresponding to residues surrounding Y133 of human Alpha-synuclein protein. The exact sequence is proprietary.

Target

SNCA

Preservatives

Liquid in 0.42% Potassium phosphate, 0.87% Sodium chloride, pH 7.3, 30% glycerol, and 0.01% sodium azide.

Form/Appearance

Liquid in 0.42% Potassium phosphate, 0.87% Sodium chloride, pH 7.3, 30% glycerol, and 0.01% sodium azide.

Storage

Maintain refrigerated at 2-8°C for up to 2 weeks. For long term storage store at -20°C in small aliquots to prevent freeze-thaw cycles.

Note

For research use only

Clonality

Polyclonal

Source

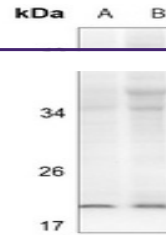
Rabbit

Uniprot ID
[O55042](#), [P37377](#), [P37840](#)
Entrez
[29219](#), [20617](#), [6622](#)
Dilution Range

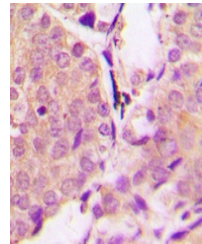
WB: 1:500:1000, IHC-P: 1:100:200

Expiration Date

12 months from date of receipt.



Western blot analysis of Alpha-synuclein...



Immunohistochemical analysis of Alpha-sy...