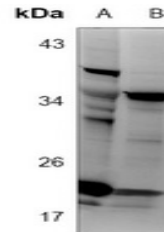


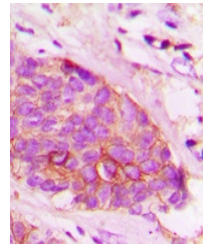
Product Datasheet

alpha Synuclein antibody (orb393166)

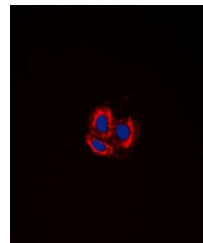
Description	Rabbit polyclonal antibody to alpha Synuclein.
Species/Host	Rabbit
Reactivity	Human, Mouse, Porcine, Primate, Rabbit, Rat, Sheep
Conjugation	Unconjugated
Tested Applications	IF, IH, WB
Immunogen	KLH-conjugated synthetic peptide encompassing a sequence within the C-term region of human Alpha-synuclein. The exact sequence is proprietary.
Target	SNCA
Preservatives	Liquid in 0.42% Potassium phosphate, 0.87% Sodium chloride, pH 7.3, 30% glycerol, and 0.01% sodium azide.
Form/Appearance	Liquid in 0.42% Potassium phosphate, 0.87% Sodium chloride, pH 7.3, 30% glycerol, and 0.01% sodium azide.
Storage	Maintain refrigerated at 2-8°C for up to 2 weeks. For long term storage store at -20°C in small aliquots to prevent freeze-thaw cycles.
Note	For research use only
Clonality	Polyclonal
Source	Rabbit
Uniprot ID	055042, P37377, P37840
Entrez	29219, 20617, 6622
Dilution Range	WB: 1:500:1000, IHC-P: 1:100:200, IF/ICC: 1:100:500
Expiration Date	12 months from date of receipt.



Western blot analysis of Alpha-synuclein...



Immunohistochemical analysis of Alpha-sy...



Immunofluorescent analysis of Alpha-synu...