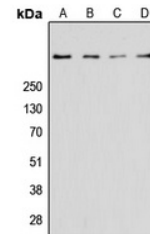


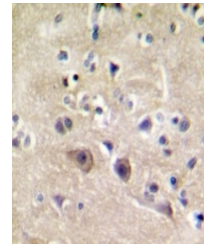
Product Datasheet

RYR2 antibody (orb393157)

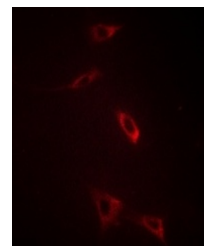
Description	Rabbit polyclonal antibody to RYR2.
Species/Host	Rabbit
Reactivity	Human, Mouse, Rabbit, Rat
Conjugation	Unconjugated
Tested Applications	IF, IH, WB
Immunogen	KLH-conjugated synthetic peptide encompassing a sequence within the center region of human Ryanodine Receptor 2. The exact sequence is proprietary.
Target	RYR2
Preservatives	Liquid in 0.42% Potassium phosphate, 0.87% Sodium chloride, pH 7.3, 30% glycerol, and 0.01% sodium azide.
Form/Appearance	Liquid in 0.42% Potassium phosphate, 0.87% Sodium chloride, pH 7.3, 30% glycerol, and 0.01% sodium azide.
Storage	Maintain refrigerated at 2-8°C for up to 2 weeks. For long term storage store at -20°C in small aliquots to prevent freeze-thaw cycles.
Note	For research use only
Clonality	Polyclonal
Source	Rabbit
Uniprot ID	E9Q401 , B0LPN4 , Q92736
Entrez	20191 , 6262 , 689560
Dilution Range	WB: 1:500:1000
Expiration Date	12 months from date of receipt.



Western blot analysis of Ryanodine Recep...



Immunohistochemical analysis of Ryanodin...



Immunofluorescent analysis of Ryanodine

...