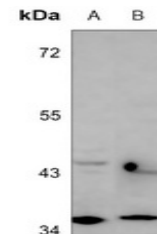


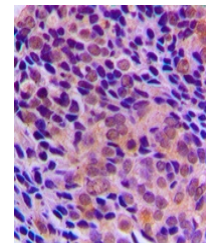
Product Datasheet

RRAGA antibody (orb393154)

Description	Rabbit polyclonal antibody to RRAGA.
Species/Host	Rabbit
Reactivity	Human, Mouse, Primate, Rat
Conjugation	Unconjugated
Tested Applications	IH, WB
Immunogen	KLH-conjugated synthetic peptide encompassing a sequence within the C-term region of human RagA/B. The exact sequence is proprietary.
Target	RRAGA; RRAGB
Preservatives	Liquid in 0.42% Potassium phosphate, 0.87% Sodium chloride, pH 7.3, 30% glycerol, and 0.01% sodium azide.
Form/Appearance	Liquid in 0.42% Potassium phosphate, 0.87% Sodium chloride, pH 7.3, 30% glycerol, and 0.01% sodium azide.
Storage	Maintain refrigerated at 2-8°C for up to 2 weeks. For long term storage store at -20°C in small aliquots to prevent freeze-thaw cycles.
Note	For research use only
Clonality	Polyclonal
Source	Rabbit
Uniprot ID	Q5VZM2 , Q63487 , Q80X95 , Q63486 , Q7L523 , Q6NTA4
Entrez	10325 , 100909655 , 117044 , 68441 , 10670 , 245670
Dilution Range	WB: 1:500:1000, IHC-P: 1:100:200
Expiration Date	12 months from date of receipt.



Western blot analysis of RagA/B expressi...



Immunohistochemical analysis of RagA/B S...