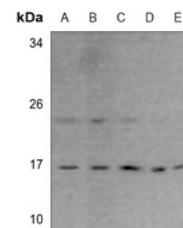


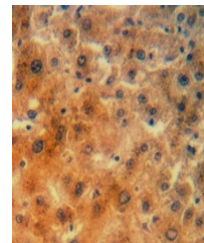
Product Datasheet

RPS23 antibody (orb393152)

Description	Rabbit polyclonal antibody to RPS23.
Species/Host	Rabbit
Reactivity	Human, Mouse, Porcine, Rat
Conjugation	Unconjugated
Tested Applications	IH, WB
Immunogen	KLH-conjugated synthetic peptide encompassing a sequence within the N-term region of human RPS23. The exact sequence is proprietary.
Target	RPS23
Preservatives	Liquid in 0.42% Potassium phosphate, 0.87% Sodium chloride, pH 7.3, 30% glycerol, and 0.01% sodium azide.
Form/Appearance	Liquid in 0.42% Potassium phosphate, 0.87% Sodium chloride, pH 7.3, 30% glycerol, and 0.01% sodium azide.
Storage	Maintain refrigerated at 2-8°C for up to 2 weeks. For long term storage store at -20°C in small aliquots to prevent freeze-thaw cycles.
Note	For research use only
Clonality	Polyclonal
Source	Rabbit
Uniprot ID	P62266 , P62267 , P62268
Entrez	124323 , 66475 , 6228
Dilution Range	WB: 1:500:1000
Expiration Date	12 months from date of receipt.



Western blot analysis of RPS23 expressio...



Immunohistochemical analysis of RPS23 st...