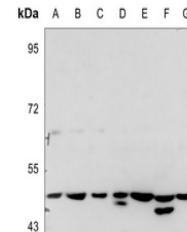


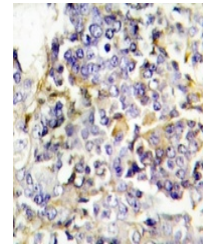
Product Datasheet

PTX3 antibody (orb393144)

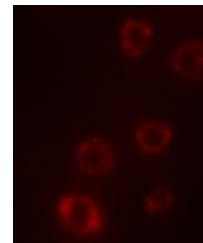
Description	Rabbit polyclonal antibody to PTX3.
Species/Host	Rabbit
Reactivity	Human, Mouse, Porcine, Rat
Conjugation	Unconjugated
Tested Applications	IF, IH, WB
Immunogen	KLH-conjugated synthetic peptide encompassing a sequence within the N-term region of human PTX3. The exact sequence is proprietary.
Target	PTX3
Preservatives	Liquid in 0.42% Potassium phosphate, 0.87% Sodium chloride, pH 7.3, 30% glycerol, and 0.01% sodium azide.
Form/Appearance	Liquid in 0.42% Potassium phosphate, 0.87% Sodium chloride, pH 7.3, 30% glycerol, and 0.01% sodium azide.
Storage	Shipped at 4°C. Upon delivery aliquot and store at -20°C for one year. Avoid freeze/thaw cycles.
Note	For research use only
Clonality	Polyclonal
Source	Rabbit
Uniprot ID	P48759 , P26022
Entrez	5806 , 19288
Dilution Range	WB: 1:500:1000
Expiration Date	12 months from date of receipt.



Western blot analysis of PTX3 expression...



Immunohistochemical analysis of PTX3 sta...



Immunofluorescent analysis of PTX3 stain...