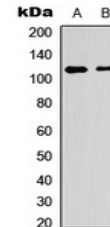


Product Datasheet

PTPRA (Phospho-Y798) antibody (orb393143)

Description	Rabbit polyclonal antibody to PTPRA (Phospho-Y798)
Species/Host	Rabbit
Reactivity	Human, Mouse, Primate, Rabbit, Rat, Sheep, Zebrafish
Conjugation	Unconjugated
Tested Applications	WB
Immunogen	KLH-conjugated synthetic phosphopeptide corresponding to residues surrounding Y798 of human PTP alpha protein. The exact sequence is proprietary.
Target	PTPRA
Preservatives	Liquid in 0.42% Potassium phosphate, 0.87% Sodium chloride, pH 7.3, 30% glycerol, and 0.01% sodium azide.
Form/Appearance	Liquid in 0.42% Potassium phosphate, 0.87% Sodium chloride, pH 7.3, 30% glycerol, and 0.01% sodium azide.
Storage	Shipped at 4°C. Upon delivery aliquot and store at -20°C for one year. Avoid freeze/thaw cycles.
Note	For research use only
Clonality	Polyclonal
Source	Rabbit
Uniprot ID	Q03348 , P18433 , P18052
Entrez	5786 , 19262
Dilution Range	WB: 1:500:1000
Expiration Date	12 months from date of receipt.



Western blot analysis of PTP alpha (Phos...