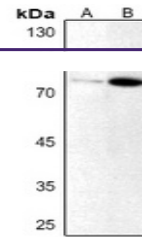

Product Datasheet

PRKCI (Phospho-T412/410) antibody (orb393138)

Description

Rabbit polyclonal antibody to PRKCI (Phospho-



Western blot analysis of PKC iota/zeta (...

Species/Host

Rabbit

Reactivity

Human, Mouse, Rabbit, Rat, Zebrafish

Conjugation

Unconjugated

Tested Applications

IF, IH, WB

Immunogen

KLH-conjugated synthetic phosphopeptide corresponding to residues surrounding T412/410 of human PKC iota/zeta protein. The exact sequence is proprietary.

Target

PRKCI; PRKCZ

Preservatives

Liquid in 0.42% Potassium phosphate, 0.87% Sodium chloride, pH 7.3, 30% glycerol, and 0.01% sodium azide.

Form/Appearance

Liquid in 0.42% Potassium phosphate, 0.87% Sodium chloride, pH 7.3, 30% glycerol, and 0.01% sodium azide.

Storage

Maintain refrigerated at 2-8°C for up to 2 weeks. For long term storage store at -20°C in small aliquots to prevent freeze-thaw cycles.

Note

For research use only

Clonality

Polyclonal

Source

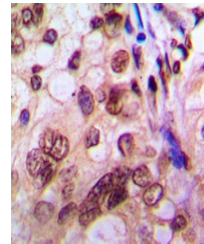
Rabbit

Uniprot ID
[F1M7Y5](#), [Q02956](#), [Q62074](#), [P41743](#), [Q05513](#), [P09217](#)
Entrez
[18759](#), [18762](#), [5584](#), [84006](#), [25522](#), [5590](#)
Dilution Range

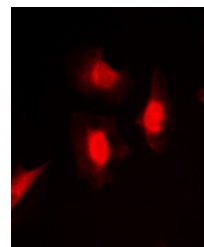
WB: 1:500:1000, IHC-P: 1:100:200, IF/ICC: 1:100:500

Expiration Date

12 months from date of receipt.



Immunohistochemical analysis of PKC iota/zeta...



Immunofluorescent analysis of PKC iota/zeta...