
Product Datasheet

PIK3R1 (Phospho-Y467/199) antibody (orb393134)

Description

Rabbit polyclonal antibody to PIK3R1

Species/Host

Rabbit

Reactivity

Human, Mouse, Rat

Conjugation

Unconjugated

Tested Applications

IF, IH, WB

Immunogen

KLH-conjugated synthetic phosphopeptide corresponding to residues surrounding Y467/199 of human PI3K p85 alpha/p55 gamma protein. The exact sequence is proprietary.

Target

PIK3R1; PIK3R3

Preservatives

Liquid in 0.42% Potassium phosphate, 0.87% Sodium chloride, pH 7.3, 30% glycerol, and 0.01% sodium azide.

Form/Appearance

Liquid in 0.42% Potassium phosphate, 0.87% Sodium chloride, pH 7.3, 30% glycerol, and 0.01% sodium azide.

Storage

Maintain refrigerated at 2-8°C for up to 2 weeks. For long term storage store at -20°C in small aliquots to prevent freeze-thaw cycles.

Note

For research use only

Clonality

Polyclonal

Source

Rabbit

Uniprot ID

[Q64143](#), [P26450](#), [P27986](#), [Q63789](#), [Q63787](#), [Q92569](#)

Entrez

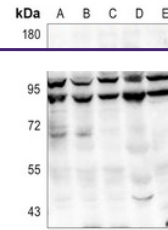
[5295](#), [60664](#), [18708](#), [18710](#), [25513](#)

Dilution Range

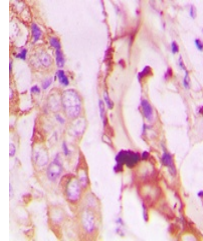
WB: 1:500:1000, IHC-P: 1:100:200, IF/ICC: 1:100:500

Expiration Date

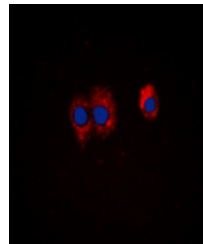
12 months from date of receipt.



Western blot analysis of PI3K p85 alpha/...



Immunohistochemical analysis of PI3K p85...



Immunofluorescent analysis of PI3K p85 a...