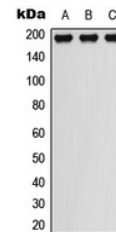


Product Datasheet

PDGFR beta (Phospho-Y751) antibody (orb393131)

Description	Rabbit polyclonal antibody to PDGFR beta (Phospho-Y751)
Species/Host	Rabbit
Reactivity	Human, Mouse, Porcine, Rabbit, Rat
Conjugation	Unconjugated
Tested Applications	WB
Immunogen	KLH-conjugated synthetic phosphopeptide corresponding to residues surrounding Y751 of human PDGFR beta protein. The exact sequence is proprietary.
Target	PDGFRB
Preservatives	Liquid in 0.42% Potassium phosphate, 0.87% Sodium chloride, pH 7.3, 30% glycerol, and 0.01% sodium azide.
Form/Appearance	Liquid in 0.42% Potassium phosphate, 0.87% Sodium chloride, pH 7.3, 30% glycerol, and 0.01% sodium azide.
Storage	Maintain refrigerated at 2-8°C for up to 2 weeks. For long term storage store at -20°C in small aliquots to prevent freeze-thaw cycles.
Note	For research use only
Clonality	Polyclonal
Source	Rabbit
Uniprot ID	P05622, P09619, Q05030
Entrez	5159, 24629, 18596
Dilution Range	WB: 1:500:1000
Expiration Date	12 months from date of receipt.



Western blot analysis of PDGFR beta (Pho...