
Product Datasheet

PAK1 (Phospho-S144/141/139) antibody (orb393128)

Description

Rabbit polyclonal antibody to PAK1 (Phospho-

Species/Host

Rabbit

Reactivity

Human, Mouse, Rat

Conjugation

Unconjugated

Tested Applications

IH, WB

Immunogen

KLH-conjugated synthetic phosphopeptide corresponding to residues surrounding S144/141/139 of human PAK1/2/3 protein. The exact sequence is proprietary.

Target

PAK1; PAK2; PAK3

Preservatives

Liquid in 0.42% Potassium phosphate, 0.87% Sodium chloride, pH 7.3, 30% glycerol, and 0.01% sodium azide.

Form/Appearance

Liquid in 0.42% Potassium phosphate, 0.87% Sodium chloride, pH 7.3, 30% glycerol, and 0.01% sodium azide.

Storage

Maintain refrigerated at 2-8°C for up to 2 weeks. For long term storage store at -20°C in small aliquots to prevent freeze-thaw cycles.

Note

For research use only

Clonality

Polyclonal

Source

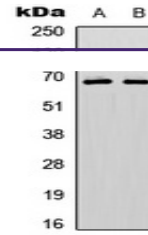
Rabbit

Uniprot ID
[Q13153](#), [Q13177](#), [Q64303](#), [P35465](#), [Q61036](#), [O75914](#), [Q62829](#), [Q8CIN4](#), [O88643](#)
Entrez
[5062](#), [18481](#), [5058](#), [29433](#), [224105](#), [5063](#), [29431](#), [100910732](#)
Dilution Range

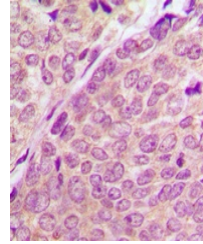
WB: 1:500:1000, IHC-P: 1:100:200

Expiration Date

12 months from date of receipt.



Western blot analysis of PAK1/2/3 (Phosp...



Immunohistochemical analysis of PAK1/2/3...