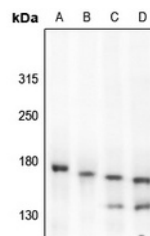


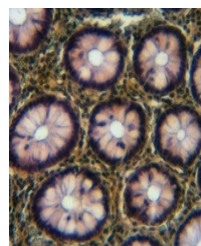
Product Datasheet

MET (Phospho-Y1349) antibody (orb393106)

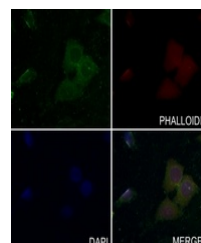
Description	Rabbit polyclonal antibody to MET (Phospho-Y1349)
Species/Host	Rabbit
Reactivity	Human, Mouse, Porcine, Rat
Conjugation	Unconjugated
Tested Applications	IF, IH, WB
Immunogen	KLH-conjugated synthetic phosphopeptide corresponding to residues surrounding Y1349 of human c-Met protein. The exact sequence is proprietary.
Target	MET
Preservatives	Liquid in 0.42% Potassium phosphate, 0.87% Sodium chloride, pH 7.3, 30% glycerol, and 0.01% sodium azide.
Form/Appearance	Liquid in 0.42% Potassium phosphate, 0.87% Sodium chloride, pH 7.3, 30% glycerol, and 0.01% sodium azide.
Storage	Maintain refrigerated at 2-8°C for up to 2 weeks. For long term storage store at -20°C in small aliquots to prevent freeze-thaw cycles.
Note	For research use only
Clonality	Polyclonal
Source	Rabbit
Uniprot ID	P97523, P16056, P08581
Entrez	24553, 4233
Dilution Range	WB: 1:500:1000
Expiration Date	12 months from date of receipt.



Western blot analysis of c-Met (Phospho-...



Immunohistochemical analysis of c-Met (P...



Immunofluorescent analysis of c-Met (Pho...