
Product Datasheet

MED1 (Phospho-T1457) antibody (orb393103)

Description

Rabbit polyclonal antibody to MED1 (Phospho-

Species/Host

Rabbit

Reactivity

Human, Mouse, Primate, Rat

Conjugation

Unconjugated

Tested Applications

ChIP, IF, IH, IP, WB

Immunogen

KLH-conjugated synthetic phosphopeptide corresponding to residues surrounding T1457 of human TRAP220 protein. The exact sequence is proprietary.

Target

MED1

Preservatives

Liquid in 0.42% Potassium phosphate, 0.87% Sodium chloride, pH 7.3, 30% glycerol, and 0.01% sodium azide.

Form/Appearance

Liquid in 0.42% Potassium phosphate, 0.87% Sodium chloride, pH 7.3, 30% glycerol, and 0.01% sodium azide.

Storage

Maintain refrigerated at 2-8°C for up to 2 weeks. For long term storage store at -20°C in small aliquots to prevent freeze-thaw cycles.

Note

For research use only

Clonality

Polyclonal

Source

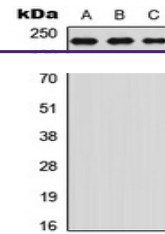
Rabbit

Uniprot ID
[Q15648](#), [Q925J9](#)
Entrez
[5469](#), [19014](#)
Dilution Range

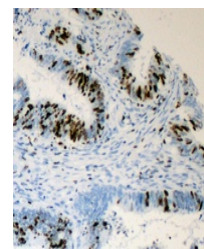
WB: 1:500:1000, IHC-P: 1:100:200, IF/ICC: 1:100:500, IP: 1:10:100, ChIP: Use at an assay dependent concentration

Expiration Date

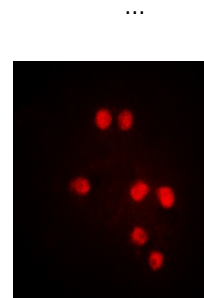
12 months from date of receipt.



Western blot analysis of TRAP220 (Phospho...)



Immunohistochemical analysis of TRAP220



Immunofluorescent analysis of TRAP220 (P...)