

---

## Product Datasheet

### PRKD1 (Phospho-S738/S742) antibody (orb393091)

**Description**

Rabbit polyclonal antibody to PRKD1

**Species/Host**

Rabbit

**Reactivity**

Human, Mouse, Porcine, Primate, Rat, Sheep

**Conjugation**

Unconjugated

**Tested Applications**

IH, WB

**Immunogen**

KLH-conjugated synthetic phosphopeptide corresponding to residues surrounding S738/S742 of human PRKD1/2/3 protein. The exact sequence is proprietary.

**Target**

PRKD1; PRKD2; PRKD3

**Preservatives**

Liquid in 0.42% Potassium phosphate, 0.87% Sodium chloride, pH 7.3, 30% glycerol, and 0.01% sodium azide.

**Form/Appearance**

Liquid in 0.42% Potassium phosphate, 0.87% Sodium chloride, pH 7.3, 30% glycerol, and 0.01% sodium azide.

**Storage**

Maintain refrigerated at 2-8°C for up to 2 weeks. For long term storage store at -20°C in small aliquots to prevent freeze-thaw cycles.

**Note**

For research use only

**Clonality**

Polyclonal

**Source**

Rabbit

**Uniprot ID**

[Q62101](#), [Q9WTQ1](#), [Q8BZ03](#), [Q15139](#), [O94806](#), [Q8K1Y2](#), [Q5XIS9](#), [Q9BZL6](#)

**Entrez**

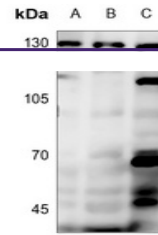
[85421](#), [23683](#), [101540](#), [25865](#), [292658](#), [5587](#), [75292](#), [18760](#)

**Dilution Range**

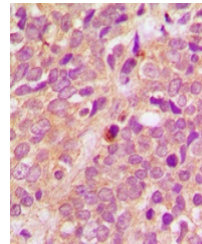
WB: 1:500:1000, IHC-P: 1:100:200

**Expiration Date**

12 months from date of receipt.



Western blot analysis of PRKD1/2/3 (Phos...)



Immunohistochemical analysis of PRKD1/2/3