

## Product Datasheet

### MPZ antibody (orb39309)

**Description** Peptide affinity purified rabbit polyclonal antibody.

**Species/Host** Rabbit

**Reactivity** Human

**Conjugation** Unconjugated

**Tested Applications** FC, IHC-P, WB

**Immunogen** Synthetic Peptide

**Target** MPZ

**Form/Appearance** Purified polyclonal antibody supplied in PBS with 0.09% (W/V) sodium azide. This antibody is purified through a protein A column, followed by peptide affinity purification.

**Storage** Maintain refrigerated at 2-8°C for up to 2 weeks. For long term storage store at -20°C in small aliquots to prevent freeze-thaw cycles

**Note** For research use only

**Isotype** Rabbit IgG

**Clonality** Polyclonal

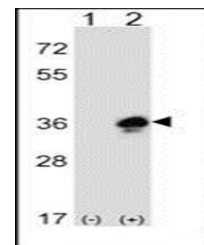
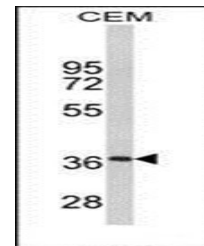
**MW** 27555

**Uniprot ID** [P25189](#)

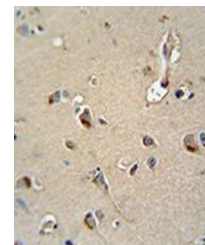
**NCBI** [NP\\_000521.2](#)

**Dilution Range** WB: 1:1000, FACS: 1:10-50, IHC-P: 1:50-100

**Expiration Date** 12 months from date of receipt.



Western blot analysis of 293 cell lysate...



Immunohistochemical analysis of formalin...