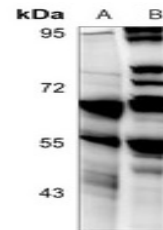


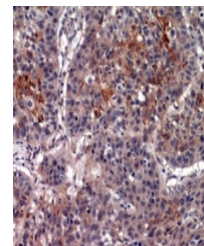
Product Datasheet

IL13RA2 antibody (orb393080)

Description	Rabbit polyclonal antibody to IL13RA2.
Species/Host	Rabbit
Reactivity	Human, Mouse, Rat
Conjugation	Unconjugated
Tested Applications	IF, IH, WB
Immunogen	KLH-conjugated synthetic peptide encompassing a sequence within the center region of human CD213a2. The exact sequence is proprietary.
Target	IL13RA2
Preservatives	Liquid in 0.42% Potassium phosphate, 0.87% Sodium chloride, pH 7.3, 30% glycerol, and 0.01% sodium azide.
Form/Appearance	Liquid in 0.42% Potassium phosphate, 0.87% Sodium chloride, pH 7.3, 30% glycerol, and 0.01% sodium azide.
Storage	Maintain refrigerated at 2-8°C for up to 2 weeks. For long term storage store at -20°C in small aliquots to prevent freeze-thaw cycles.
Note	For research use only
Clonality	Polyclonal
Source	Rabbit
Uniprot ID	Q14627 , O88786 , Q8VHK6
Entrez	16165 , 3598
Dilution Range	WB: 1:500:1000
Expiration Date	12 months from date of receipt.

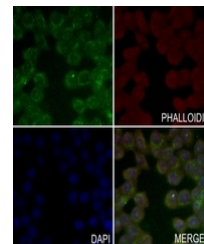


Western blot analysis of CD213a2 express...



Immunohistochemical analysis of CD213a2

...



Immunofluorescent analysis of CD213a2 st...