
Product Datasheet

IGF1R (Phospho-Y1161) antibody (orb393078)

Description

Rabbit polyclonal antibody to IGF1R (Phospho-

Species/Host

Rabbit

Reactivity

Human, Mouse, Rat, Zebrafish

Conjugation

Unconjugated

Tested Applications

IF, IH, WB

Immunogen

KLH-conjugated synthetic phosphopeptide corresponding to residues surrounding Y1161 of human IGF1 Receptor protein. The exact sequence is proprietary.

Target

IGF1R

Preservatives

Liquid in 0.42% Potassium phosphate, 0.87% Sodium chloride, pH 7.3, 30% glycerol, and 0.01% sodium azide.

Form/Appearance

Liquid in 0.42% Potassium phosphate, 0.87% Sodium chloride, pH 7.3, 30% glycerol, and 0.01% sodium azide.

Storage

Shipped at 4°C. Upon delivery aliquot and store at -20°C for one year. Avoid freeze/thaw cycles.

Note

For research use only

Clonality

Polyclonal

Source

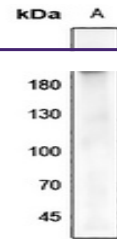
Rabbit

Uniprot ID
[P06213](#), [P08069](#), [P15127](#), [P15208](#), [Q60751](#), [P24062](#)
Entrez
[25718](#), [16337](#), [16001](#), [3480](#)
Dilution Range

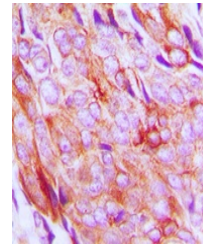
WB: 1:500:1000, IHC-P: 1:100:200, IF/ICC: 1:100:500

Expiration Date

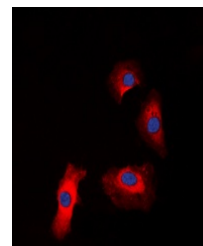
12 months from date of receipt.



Western blot analysis of IGF1 Receptor (...



Immunohistochemical analysis of IGF1 Recep...



Immunofluorescent analysis of IGF1 Recep...