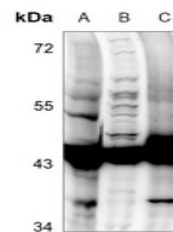


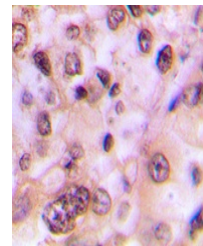
Product Datasheet

GSK3B (Phospho-S9) antibody (orb393067)

Description	Rabbit polyclonal antibody to GSK3B (Phospho-S9)
Species/Host	Rabbit
Reactivity	Human, Mouse, Porcine, Rat, Sheep, Zebrafish
Conjugation	Unconjugated
Tested Applications	IH, WB
Immunogen	KLH-conjugated synthetic phosphopeptide corresponding to residues surrounding S9 of human GSK3 beta protein. The exact sequence is proprietary.
Target	GSK3B
Preservatives	Liquid in 0.42% Potassium phosphate, 0.87% Sodium chloride, pH 7.3, 30% glycerol, and 0.01% sodium azide.
Form/Appearance	Liquid in 0.42% Potassium phosphate, 0.87% Sodium chloride, pH 7.3, 30% glycerol, and 0.01% sodium azide.
Storage	Maintain refrigerated at 2-8°C for up to 2 weeks. For long term storage store at -20°C in small aliquots to prevent freeze-thaw cycles.
Note	For research use only
Clonality	Polyclonal
Source	Rabbit
Uniprot ID	Q9WV60 , P49841 , P18266
Entrez	84027 , 2932 , 56637
Dilution Range	WB: 1:500:1000, IHC-P: 1:100:200
Expiration Date	12 months from date of receipt.



Western blot analysis of GSK3 beta (Phos...



Immunohistochemical analysis of GSK3 bet...