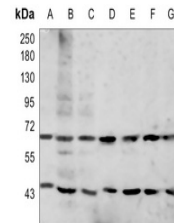


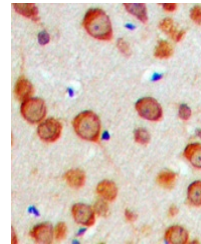
Product Datasheet

GAS6 antibody (orb393058)

Description	Rabbit polyclonal antibody to GAS6.
Species/Host	Rabbit
Reactivity	Human
Conjugation	Unconjugated
Tested Applications	IH, WB
Immunogen	KLH-conjugated synthetic peptide encompassing a sequence within the center region of human GAS6. The exact sequence is proprietary.
Target	GAS6
Preservatives	Liquid in 0.42% Potassium phosphate, 0.87% Sodium chloride, pH 7.3, 30% glycerol, and 0.01% sodium azide.
Form/Appearance	Liquid in 0.42% Potassium phosphate, 0.87% Sodium chloride, pH 7.3, 30% glycerol, and 0.01% sodium azide.
Storage	Maintain refrigerated at 2-8°C for up to 2 weeks. For long term storage store at -20°C in small aliquots to prevent freeze-thaw cycles.
Note	For research use only
Clonality	Polyclonal
Source	Rabbit
Uniprot ID	Q14393
Entrez	2621
Dilution Range	WB: 1:500:1000, IHC-P: 1:100:200
Expiration Date	12 months from date of receipt.



Western blot analysis of GAS6 expression...



Immunohistochemical analysis of GAS6 sta...