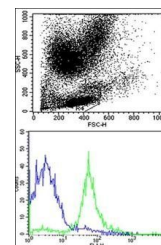
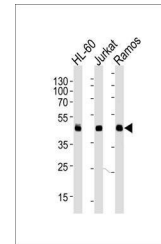


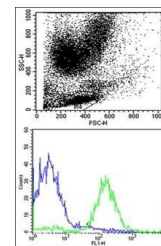
Product Datasheet

HLA-A antibody (orb39304)

Description	Rabbit polyclonal antibody to HLA-A
Species/Host	Rabbit
Reactivity	Human
Conjugation	Unconjugated
Tested Applications	FC, IHC-P, WB
Immunogen	Synthetic Peptide
Target	This HLA-B antibody is generated from rabbits immunized with a KLH conjugated synthetic peptide between 62-90 amino acids from the N-terminal region of human HLA-B.
Form/Appearance	Purified polyclonal antibody supplied in PBS with 0.09% (W/V) sodium azide. This antibody is purified through a protein A column, followed by peptide affinity purification.
Storage	Maintain refrigerated at 2-8°C for up to 2 weeks. For long term storage store at -20°C in small aliquots to prevent freeze-thaw cycles
Note	For research use only
Isotype	Rabbit IgG
Clonality	Polyclonal
Uniprot ID	P03989
Dilution Range	FACS: 1:10-50, WB: 1:1000, IHC-P: 1:10-50
Expiration Date	12 months from date of receipt.



Flow cytometric analysis of human periph...



Flow cytometric analysis of human periph...