

Product Datasheet

Mouse DKK1 ELISA Kit (orb391069)

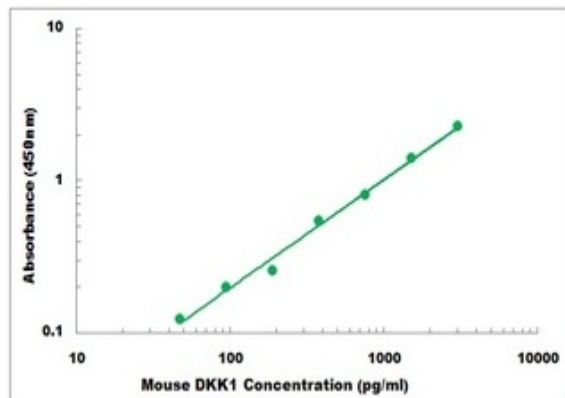
Description	Sandwich ELISA for quantitative detection of mouse DKK1 concentrations.
Reactivity	Mouse
Range	46.9 pg/ml - 3000 pg/ml
Tested Applications	ELISA
Target	DKK1
Storage	Shipped and store at 4°C for 6 months, store at -20°C for one year. Avoid freeze/thaw cycles.
Note	For research use only
Application notes	Detection Method: Colorimetric Sample Types: Cell Culture Supernatants, Serum, Plasma
Sample Types	Cell Culture Supernates, Serum, Plasma
Uniprot ID	054908
Sensitivity	15 pg/ml
Entrez	13380
Expiration Date	Please enquire.

Biorbyt Ltd.

7 Signet Court, Swann's Road,
Cambridge, CB5 8LA, United Kingdom
Email: info@biorbyt.com, support@biorbyt.com
Phone: [+44 \(0\) 1223 859-353](tel:+44(0)1223859353) | Fax: [+1 \(415\) 651-8558](tel:+1(415)6518558)

Biorbyt LLC.

68 TW Alexander Drive,
Durham, NC, 27713, United States
Email: info@biorbyt.com, support@biorbyt.com
Phone: [+1 \(415\) 906-5211](tel:+1(415)9065211) | Fax: [+1 \(415\) 651-8558](tel:+1(415)6518558)



Representative Standard Curve

Biorbyt Ltd.

7 Signet Court, Swann's Road,
Cambridge, CB5 8LA, United Kingdom
Email: info@biorbyt.com, support@biorbyt.com
Phone: [+44 \(0\) 1223 859-353](tel:+44(0)1223859353) | Fax: [+1 \(415\) 651-8558](tel:+1(415)6518558)

Biorbyt LLC.

68 TW Alexander Drive,
Durham, NC, 27713, United States
Email: info@biorbyt.com, support@biorbyt.com
Phone: [+1 \(415\) 906-5211](tel:+1(415)9065211) | Fax: [+1 \(415\) 651-8558](tel:+1(415)6518558)