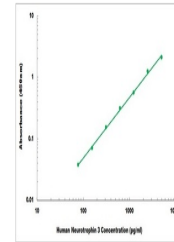


## Product Datasheet

### Human NTF3 ELISA Kit (orb390978)

<b>Description</b>	Sandwich ELISA for quantitative detection of human NTF3 concentrations.
<b>Reactivity</b>	Human
<b>Range</b>	78 pg/ml - 5000 pg/ml
<b>Tested Applications</b>	ELISA
<b>Target</b>	NTF3
<b>Storage</b>	Shipped and store at 4°C for 6 months, store at -20°C for one year. Avoid freeze/thaw cycles.
<b>Note</b>	For research use only
<b>Application notes</b>	Detection Method: Colorimetric Sample Types: Cell Culture Supernatants, Serum
<b>Sample Types</b>	Cell Culture Supernates, Serum
<b>Uniprot ID</b>	<b>P20783</b>
<b>Sensitivity</b>	40 pg/ml
<b>Entrez</b>	<b>4908</b>
<b>Expiration Date</b>	Please enquire.



Representative  
Standard  
Curve