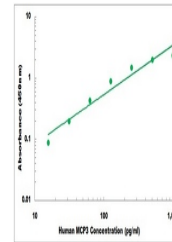


Product Datasheet

Human CCL7 ELISA Kit (orb390957)

Description	Sandwich ELISA for quantitative detection of human CCL7 concentrations.
Reactivity	Human
Range	15.6 pg/ml - 1000 pg/ml
Tested Applications	ELISA
Target	CCL7
Storage	Shipped and store at 4°C for 6 months, store at -20°C for one year. Avoid freeze/thaw cycles.
Note	For research use only
Application notes	Detection Method: Colorimetric Sample Types: Cell Culture Supernatants, Serum, Plasma
Sample Types	Cell Culture Supernates, Serum, Plasma
Uniprot ID	P80098
Sensitivity	1 pg/ml
Entrez	6354
Expiration Date	Please enquire.



Representative
Standard
Curve