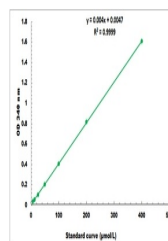


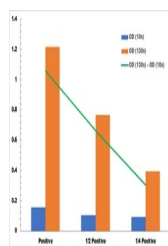
## Product Datasheet

# Glucose-6-Phosphate Dehydrogenase Microplate Assay Kit (orb390752)

<b>Description</b>	Detection and Quantification of Glucose-6-Phosphate Dehydrogenase Activity.
<b>Reactivity</b>	All
<b>Range</b>	4 µmol/L - 400 µmol/L
<b>Tested Applications</b>	FA
<b>Storage</b>	Shipped and store at 4°C for 6 months.
<b>Note</b>	For research use only
<b>Application notes</b>	Detection Method: Colorimetric Sample Types: Urine, Serum, Plasma, Tissue extracts, Cell lysate, Cell culture media and Other biological fluids
<b>Sample Types</b>	Urine, Serum, Plasma, Tissue extracts, Cell lysate, Cell culture media, Other biological fluids
<b>CAS Number</b>	9001-40-5
<b>Expiration Date</b>	12 months from date of receipt.



Representative Standard Curve



Positive Control reaction in 96-well pla...