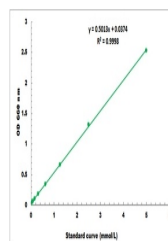


## Product Datasheet

# Ca<sup>2+</sup>/Mg<sup>2+</sup> ATPase Microplate Assay Kit (orb390726)

<b>Description</b>	Detection and Quantification of Ca <sup>2+</sup> /Mg <sup>2+</sup> ATPase Activity.
<b>Reactivity</b>	All
<b>Range</b>	0.01 µmol/ml - 5 µmol/ml
<b>Tested Applications</b>	FA
<b>Storage</b>	Shipped and store at 4°C for 6 months.
<b>Note</b>	For research use only
<b>Application notes</b>	Detection Method: Colorimetric Sample Types: Urine, Serum, Plasma, Tissue extracts, Cell lysate, Cell culture media and Other biological fluids
<b>Sample Types</b>	Urine, Serum, Plasma, Tissue extracts, Cell lysate, Cell culture media, Other biological fluids
<b>CAS Number</b>	9000-83-3
<b>Expiration Date</b>	12 months from date of receipt.



Representative  
Standard  
Curve