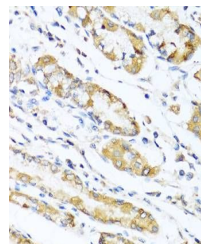


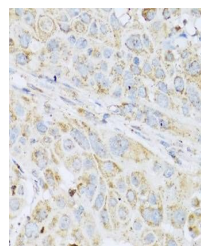
Product Datasheet

Lysozyme antibody (orb390280)

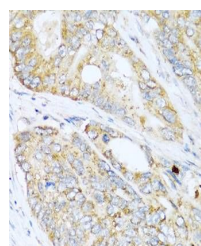
Description	Rabbit polyclonal antibody to Lysozyme.
Reactivity	Human
Conjugation	Unconjugated
Tested Applications	WB
Immunogen	Recombinant fusion protein of human Lysozyme (Lysozyme (LYZ))(NP_000230.1).
Preservatives	PBS with 0.02% sodium azide,50% glycerol,pH7.3.
Storage	Maintain refrigerated at 2-8°C for up to 2 weeks. For long term storage store at -20°C in small aliquots to prevent freeze-thaw cycles.
Note	For research use only
Isotype	IgG
Clonality	Polyclonal
MW	16kDa
Uniprot ID	P61626
Dilution Range	WB: 1:500-2000, IHC-P: 1:50-100
Expiration Date	12 months from date of receipt.



Immunohistochemical staining of human st...



Immunohistochemical staining of human es...



Immunohistochemical staining of human co...