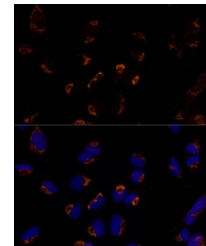


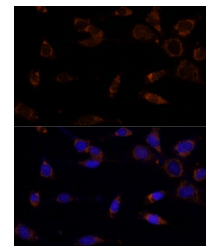
Product Datasheet

MTCH2 antibody (orb390248)

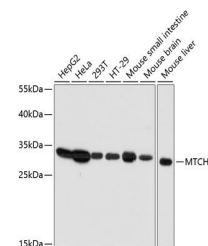
Description	Rabbit polyclonal antibody to MTCH2.
Reactivity	Human, Mouse
Conjugation	Unconjugated
Tested Applications	ICC, IF, IHC, WB
Immunogen	Recombinant fusion protein of human MTCH2(NP_055157.1).
Preservatives	PBS with 0.01% thiomersal,50% glycerol,pH7.3.
Storage	Maintain refrigerated at 2-8°C for up to 2 weeks. For long term storage store at -20°C in small aliquots to prevent freeze-thaw cycles.
Note	For research use only
Isotype	IgG
Clonality	Polyclonal
MW	33KDa
Uniprot ID	Q9Y6C9
Dilution Range	WB: 1:1000-3000
Expiration Date	12 months from date of receipt.



Immunofluorescence analysis of U-2 OS ce...



Immunofluorescence analysis of NIH-3T3 C...



Western blot analysis of extracts of var...