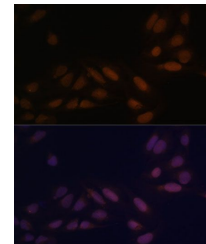


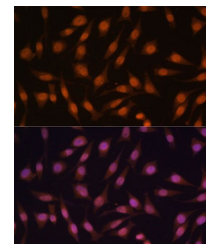
Product Datasheet

EED antibody (orb390201)

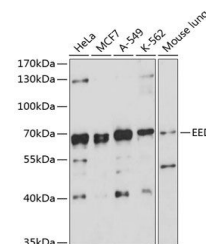
| | |
|----------------------------|---|
| Description | Rabbit polyclonal antibody to EED. |
| Reactivity | Human, Mouse, Rat |
| Conjugation | Unconjugated |
| Tested Applications | ICC, IF, IHC, WB |
| Immunogen | A synthetic peptide of human EED(NP_003788.2). |
| Preservatives | PBS with 0.01% thiomersal, 50% glycerol, pH 7.3. |
| Storage | Maintain refrigerated at 2-8°C for up to 2 weeks. For long term storage store at -20°C in small aliquots to prevent freeze-thaw cycles. |
| Note | For research use only |
| Isotype | IgG |
| Clonality | Polyclonal |
| MW | 50-75kDa |
| Uniprot ID | 075530 |
| Dilution Range | WB: 1:500-2000 |
| Expiration Date | 12 months from date of receipt. |



Immunofluorescence analysis of U-2 OS cells



Immunofluorescence analysis of L929 cells



Western blot analysis of extracts of various cell lines