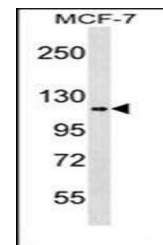
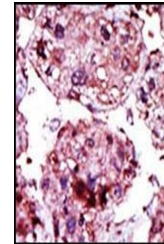


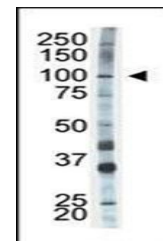
Product Datasheet

HK1 antibody (orb39018)

Description	Purified rabbit polyclonal antibody.
Species/Host	Rabbit
Reactivity	Human, Rat
Conjugation	Unconjugated
Tested Applications	IHC-P, WB
Immunogen	Synthetic Peptide
Target	HK1
Form/Appearance	Purified polyclonal antibody supplied in PBS with 0.09% (W/V) sodium azide. This antibody is purified through a protein A column, followed by peptide affinity purification.
Storage	Maintain refrigerated at 2-8°C for up to 2 weeks. For long term storage store at -20°C in small aliquots to prevent freeze-thaw cycles
Note	For research use only
Isotype	Rabbit IgG
Clonality	Polyclonal
MW	102486
Uniprot ID	P19367
NCBI	NP_000179.2 , NP_277035.2 , NP_277031.1 , NP_277033.1 , NP_277032.1
Dilution Range	WB: 1:1000, IHC-P: 1:50-100
Expiration Date	12 months from date of receipt.



Western blot analysis of MCF-7 cell line...



Western blot analysis of in mouse skelet...