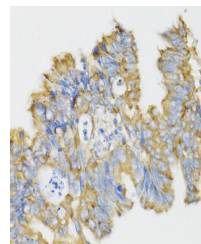


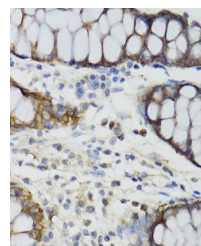
Product Datasheet

GHRL antibody (orb390153)

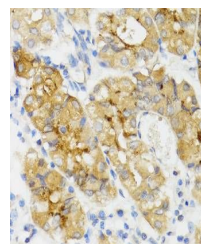
Description	Rabbit polyclonal antibody to GHRL.
Species/Host	Rabbit
Reactivity	Human, Rat
Conjugation	Unconjugated
Tested Applications	IHC, WB
Immunogen	Recombinant fusion protein of human GHRL (NP_057446.1).
Preservatives	Buffer: PBS with 0.02% sodium azide,50% glycerol,pH7.3.
Storage	Maintain refrigerated at 2-8°C for up to 2 weeks. For long term storage store at -20°C in small aliquots to prevent freeze-thaw cycles.
Note	For research use only
Isotype	IgG
Clonality	Polyclonal
Purity	Affinity purification
MW	15kDa
Uniprot ID	Q9UBU3
Entrez	51738
Dilution Range	WB: 1:500-2000, IHC-P: 1:50-200
Expiration Date	12 months from date of receipt.



Immunohistochemical staining of human re...



Immunohistochemical staining of human re...



Immunohistochemical staining of human st...