

Product Datasheet

SET antibody (orb390125)

Description Rabbit polyclonal antibody to SET.

Reactivity Human, Mouse, Rat

Conjugation Unconjugated

Tested Applications ICC, IF, IHC, WB

Immunogen Recombinant fusion protein of human SET/TAF1(NP_003002.2).

Preservatives PBS with 0.02% sodium azide,50% glycerol,pH7.3.

Storage Maintain refrigerated at 2-8°C for up to 2 weeks. For long term storage store at -20°C in small aliquots to prevent freeze-thaw cycles.

Note For research use only

Isotype IgG

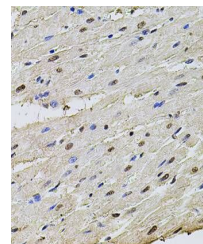
Clonality Polyclonal

MW 34kDa

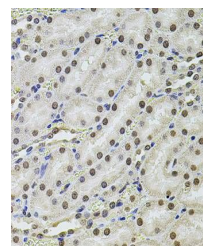
Uniprot ID [Q01105](#)

Dilution Range WB: 1:500-2000, IHC-P: 1:50-200

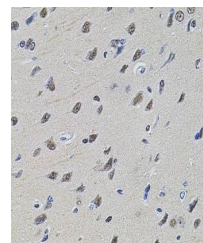
Expiration Date 12 months from date of receipt.



Immunohistochemical staining of rat hear...



Immunohistochemical staining of rat kidn...



Immunohistochemical staining of rat brai...