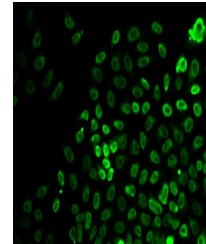


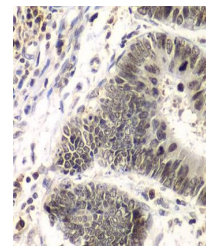
## Product Datasheet

### SMARCA4 antibody (orb390049)

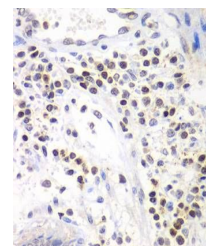
<b>Description</b>	Rabbit polyclonal antibody to SMARCA4.
<b>Species/Host</b>	Rabbit
<b>Reactivity</b>	Human
<b>Conjugation</b>	Unconjugated
<b>Tested Applications</b>	ELISA, IF, WB
<b>Immunogen</b>	A synthetic peptide corresponding to a sequence within amino acids 30-130 of human BRG1/BRG1/SMARCA4 (NP_003063.2).
<b>Preservatives</b>	PBS with 0.02% sodium azide, 50% glycerol, pH 7.3.
<b>Storage</b>	Maintain refrigerated at 2-8°C for up to 2 weeks. For long term storage store at -20°C in small aliquots to prevent freeze-thaw cycles.
<b>Note</b>	For research use only
<b>Isotype</b>	IgG
<b>Clonality</b>	Polyclonal
<b>MW</b>	180kDa
<b>Uniprot ID</b>	<a href="#">P51532</a>
<b>Dilution Range</b>	WB: 1:500-2000, IHC-P: 1:50-100, IF/ICC: 1:20-50
<b>Expiration Date</b>	12 months from date of receipt.



Immunofluorescence analysis of HeLa cell...



Immunohistochemical staining of human co...



Immunohistochemical staining of human co...