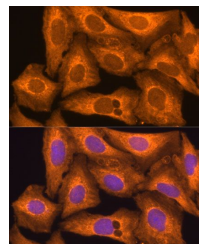


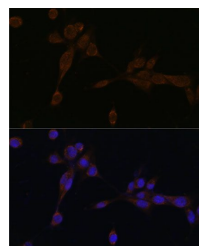
Product Datasheet

CASP12 antibody (orb390042)

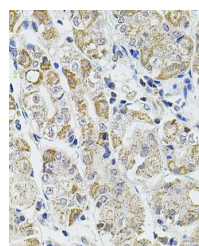
Description	Rabbit polyclonal antibody to CASP12.
Reactivity	Human, Mouse, Rat
Conjugation	Unconjugated
Tested Applications	IHC, WB
Immunogen	A synthetic peptide of human Caspase-12(NP_001177945.2).
Preservatives	PBS with 0.05% proclin300,50% glycerol,pH7.3.
Storage	Maintain refrigerated at 2-8°C for up to 2 weeks. For long term storage store at -20°C in small aliquots to prevent freeze-thaw cycles.
Note	For research use only
Isotype	IgG
Clonality	Polyclonal
MW	55KDa
Uniprot ID	Q6UXS9
Dilution Range	WB: 1:500-2000, IHC-P: 1:50-200
Expiration Date	12 months from date of receipt.



Immunofluorescence analysis of U-2 OS ce...



Immunofluorescence analysis of NIH-3T3 C...



Immunohistochemical staining of human st...