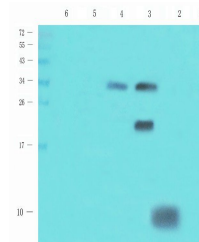


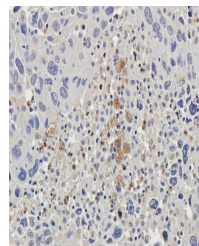
Product Datasheet

CXCL5 antibody (orb389659)

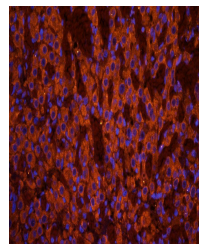
| | |
|----------------------------|--|
| Description | CXCL5 antibody |
| Species/Host | Rabbit |
| Reactivity | Guinea pig, Human, Mouse, Rat |
| Conjugation | Unconjugated |
| Tested Applications | ICC, IF, IHC-P, WB |
| Immunogen | KLH conjugated synthetic peptide derived from human CXCL5. Please contact us for the exact immunogen sequence. The peptide is available as orb14362. |
| Target | CXCL5 |
| Form/Appearance | 10 mM PBS, 0.02% sodium azide |
| Concentration | - 100 µg (in 200 µl): 0.5 mg/ml- 200 µg (in 400 µl): 0.5 mg/ml |
| Storage | Store at 4°C for up to two weeks. For long term storage, aliquot and store at -20°C, avoid freeze/thaw cycles. |
| Note | For research use only |
| Isotype | IgG |
| Clonality | Polyclonal |
| Purity | Polyclonal antibodies are purified by peptide affinity chromatography |
| MW | 12 kDa |
| Uniprot ID | P97885 , P50228 , P42830 |
| NCBI | 002985 |
| Dilution Range | WB: 1:200-1000, IHC-P: 1:100-600, IF/ICC: 1:100-600 |
| Expiration Date | 12 months from date of receipt. |



WB analysis of rat stomach (lane 1), rat...



Immunohistochemical staining of human lu...



IF analysis of rat ovary tissue using CX...