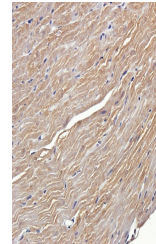


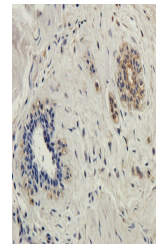
## Product Datasheet

### BCKDHA antibody (orb389658)

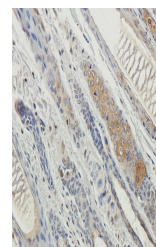
<b>Description</b>	BCKDHA antibody
<b>Species/Host</b>	Rabbit
<b>Reactivity</b>	Guinea pig, Human, Mouse, Rat
<b>Conjugation</b>	Unconjugated
<b>Tested Applications</b>	ICC, IF, IHC-P, WB
<b>Immunogen</b>	KLH conjugated synthetic peptide derived from human BCKDHA. Please contact us for the exact immunogen sequence. The peptide is available as orb14359.
<b>Target</b>	BCKDHA
<b>Form/Appearance</b>	10 mM PBS, 0.02% sodium azide
<b>Concentration</b>	- 100 µg (in 200 µl): 0.5 mg/ml- 200 µg (in 400 µl): 0.5 mg/ml
<b>Storage</b>	Store at 4°C for up to two weeks. For long term storage, aliquot and store at -20°C, avoid freeze/thaw cycles.
<b>Note</b>	For research use only
<b>Isotype</b>	IgG
<b>Clonality</b>	Polyclonal
<b>Purity</b>	Polyclonal antibodies are purified by peptide affinity chromatography
<b>MW</b>	50 kDa
<b>Uniprot ID</b>	<a href="#">P11960</a> , <a href="#">P12694</a> , <a href="#">P50136</a>
<b>NCBI</b>	<a href="#">000700</a>
<b>Dilution Range</b>	WB: 1:200-1500, IHC-P: 1:100-600, IF/ICC: 1:100-600
<b>Expiration Date</b>	12 months from date of receipt.



IHC-P image of mouse heart tissue using ...



IHC-P image of human breast cancer tissue...



IHC-P staining of guinea pig skin tissue...