
Product Datasheet

AMIGO2 antibody (orb389655)

Description

AMIGO2 antibody

Species/Host

Rabbit

Reactivity

Human, Mouse, Rat

Conjugation

Unconjugated

Tested Applications

ICC, IF, IHC-P, WB

Immunogen

KLH conjugated synthetic peptide derived from human AMIGO2. Please contact us for the exact immunogen sequence. The peptide is available as orb14356.

Target

AMIGO2

Form/Appearance

10 mM PBS, 0.02% sodium azide

Concentration

- 100 µg (in 200 µl): 0.5 mg/ml- 200 µg (in 400 µl): 0.5 mg/ml

Storage

Store at 4°C for up to two weeks. For long term storage, aliquot and store at -20°C, avoid freeze/thaw cycles.

Note

For research use only

Isotype

IgG

Clonality

Polyclonal

Purity

Polyclonal antibodies are purified by peptide affinity chromatography

MW

58 kDa

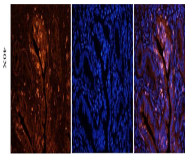
Uniprot ID
[Q80ZD9](#), [Q7TNJ4](#), [Q86SJ2](#)
NCBI
[001137140](#)
Dilution Range

WB: 1:200-1500, IHC-P: 1:100-600, IF/ICC: 1:100-600

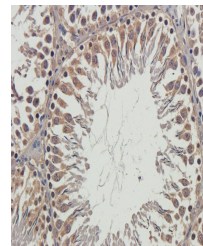
Expiration Date

12 months from date of receipt.

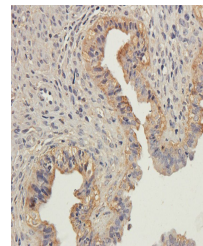
IgG IgM IgG



IF image of mouse uterus tissue using an...



Immunohistochemical staining of rat test...



Immunohistochemical staining of paraffin...