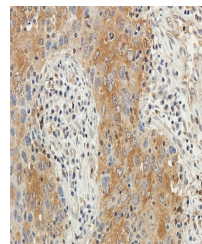


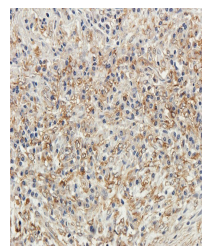
Product Datasheet

GYG1 antibody (orb389653)

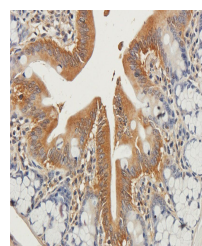
Description	GYG1 antibody
Species/Host	Rabbit
Reactivity	Guinea pig, Human, Mouse, Rat
Conjugation	Unconjugated
Tested Applications	ICC, IF, IHC-P, WB
Immunogen	KLH conjugated synthetic peptide derived from human GYG1. Please contact us for the exact immunogen sequence. The peptide is available as orb14354.
Target	GYG1
Form/Appearance	10 mM PBS, 0.02% sodium azide
Concentration	- 100 µg (in 200 µl): 0.5 mg/ml- 200 µg (in 400 µl): 0.5 mg/ml
Storage	Store at 4°C for up to two weeks. For long term storage, aliquot and store at -20°C, avoid freeze/thaw cycles.
Note	For research use only
Isotype	IgG
Clonality	Polyclonal
Purity	Polyclonal antibodies are purified by peptide affinity chromatography
MW	39 kDa
Uniprot ID	O08730 , Q9R062 , P46976
NCBI	001171649
Dilution Range	WB: 1:200-1500, IHC-P: 1:100-800, IF/ICC: 1:100-800
Expiration Date	12 months from date of receipt.



IHC-P image of human lung cancer tissue ...



Immunohistochemical staining of human lu...



Immunohistochemical staining of rat colo...