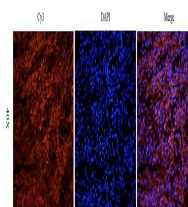


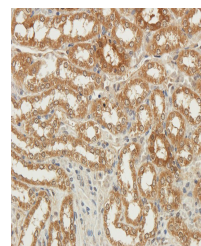
Product Datasheet

TRPV5 antibody (orb389652)

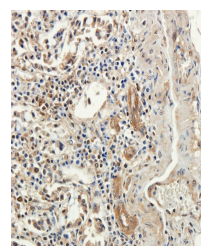
Description	TRPV5 antibody
Species/Host	Rabbit
Reactivity	Guinea pig, Mouse, Porcine, Rat
Conjugation	Unconjugated
Tested Applications	ICC, IF, IHC-P, WB
Immunogen	KLH conjugated synthetic peptide derived from human TRPV5. Please contact us for the exact immunogen sequence. The peptide is available as orb14353.
Target	TRPV5
Form/Appearance	10 mM PBS, 0.02% sodium azide
Concentration	- 100 µg (in 200 µl): 0.5 mg/ml- 200 µg (in 400 µl): 0.5 mg/ml
Storage	Store at 4°C for up to two weeks. For long term storage, aliquot and store at -20°C, avoid freeze/thaw cycles.
Note	For research use only
Isotype	IgG
Clonality	Polyclonal
Purity	Polyclonal antibodies are purified by peptide affinity chromatography
MW	82 kDa
Uniprot ID	P69744 , Q9JIP0
NCBI	062815
Dilution Range	WB: 1:200-1500, IHC-P: 1:100-800, IF/ICC: 1:100-800
Expiration Date	12 months from date of receipt.



Immunofluorescence image of pig small intestine in...



Immunohistochemical staining of paraffin...



Immunohistochemical staining of pig small...