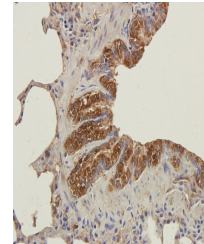


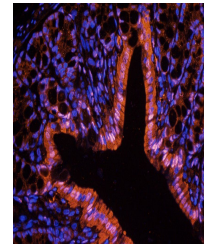
Product Datasheet

ATF4 antibody (orb389651)

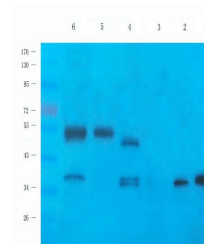
Description	ATF4 antibody
Species/Host	Rabbit
Reactivity	Guinea pig, Human, Mouse, Rat
Conjugation	Unconjugated
Tested Applications	ICC, IF, IHC-P, WB
Immunogen	KLH conjugated synthetic peptide derived from human ATF4. Please contact us for the exact immunogen sequence. The peptide is available as orb14332.
Target	ATF4
Form/Appearance	10 mM PBS, 0.02% sodium azide
Concentration	- 100 µg (in 200 µl): 0.5 mg/ml- 200 µg (in 400 µl): 0.5 mg/ml
Storage	Store at 4°C for up to two weeks. For long term storage, aliquot and store at -20°C, avoid freeze/thaw cycles.
Note	For research use only
Isotype	IgG
Clonality	Polyclonal
Purity	Polyclonal antibodies are purified by peptide affinity chromatography
MW	39 kDa
Uniprot ID	Q06507 , Q9ES19 , P18848
NCBI	001666
Dilution Range	WB: 1:200-1500, IHC-P: 1:100-600, IF/ICC: 1:100-600
Expiration Date	12 months from date of receipt.



IHC-P staining of rat lung tissue using ...



Immunofluorescence image of guinea pig r...



WB analysis of mouse brain (lane 1), rat...