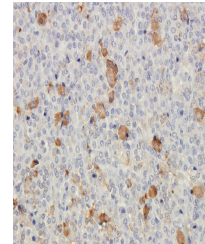


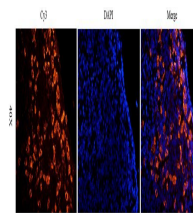
Product Datasheet

CRHR2 antibody (orb389647)

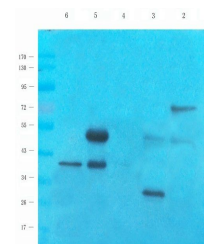
Description	CRHR2 antibody
Species/Host	Rabbit
Reactivity	Mouse, Rat
Conjugation	Unconjugated
Tested Applications	IF, IHC-P, WB
Immunogen	KLH conjugated synthetic peptide derived from human CRHR2. Please contact us for the exact immunogen sequence. The peptide is available as orb14324.
Target	CRHR2
Form/Appearance	10 mM PBS, 0.02% sodium azide
Concentration	- 100 µg (in 200 µl): 0.5 mg/ml- 200 µg (in 400 µl): 0.5 mg/ml
Storage	Store at 4°C for up to two weeks. For long term storage, aliquot and store at -20°C, avoid freeze/thaw cycles.
Note	For research use only
Isotype	IgG
Clonality	Polyclonal
Purity	Polyclonal antibodies are purified by peptide affinity chromatography
MW	47 kDa
Uniprot ID	Q60748 , P47866
NCBI	001189404
Dilution Range	WB: 1:200-1000, IHC-P: 1:100-500, IF/ICC: 1:100-500
Expiration Date	12 months from date of receipt.



IHC-P image of rat pituitary tissue using...



Immunofluorescence analysis of rat pituitary...



Western blot analysis of rat brain (lane...)