

---

## Product Datasheet

### Protein Kinase A regulatory subunit I alpha/PRKAR1A Antibody (orb389508)

**Description**

Protein Kinase A regulatory subunit I


**Species/Host**

Rabbit

**Reactivity**

Human, Rat

**Conjugation**

Unconjugated

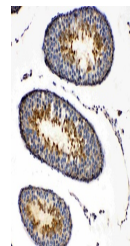
**Tested Applications**

IHC, WB

WB analysis of PRKAR1A using anti-PRKAR1...

**Immunogen**

E.coli-derived human PRKAR1A recombinant protein (Position: E2-E81). Human PRKAR1A shares 89.9% and 92.4% amino acid (aa) sequence identity with mouse and rat PRKAR1A, respectively.



IHC analysis of PRKAR1A using anti-PRKAR...

**Form/Appearance**

Lyophilized

**Concentration**

Adding 0.2 ml of distilled water will yield a concentration of 500 µg/ml.

**Storage**

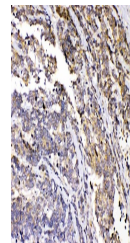
Store at -20°C for one year from date of receipt. After reconstitution, at 4°C for one month. It can also be aliquotted and stored frozen at -20°C for six months. Avoid repeated freeze-thaw cycles.

**Note**

For research use only

**Application notes**

Tested Species: In-house tested species with positive results. By Heat: Boiling the paraffin sections in 10mM citrate buffer, pH6.0, for 20mins is required for the staining of formalin/paraffin sections. Other applications have not been tested. Optimal dilutions should be determined by end users. . Add 0.2ml of distilled water will yield a concentration of 500ug/ml.



IHC analysis of PRKAR1A using anti-PRKAR...

**Isotype**

Rabbit IgG

**Clonality**

Polyclonal

**MW**

42982 MW

**Uniprot ID**
[P10644](https://www.uniprot.org/uniprot/P10644)
**Expiration Date**

12 months from date of receipt.