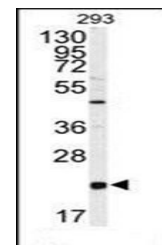
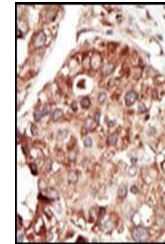


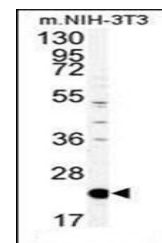
Product Datasheet

PBP antibody (orb38949)

| | |
|----------------------------|--|
| Description | Purified rabbit polyclonal antibody. |
| Species/Host | Rabbit |
| Reactivity | Human, Mouse |
| Conjugation | Unconjugated |
| Tested Applications | IHC-P, WB |
| Immunogen | Synthetic Peptide |
| Target | PEBP1 |
| Form/Appearance | Purified polyclonal antibody supplied in PBS with 0.09% (W/V) sodium azide. This antibody is purified through a protein G column, eluted with high and low pH buffers and neutralized immediately, followed by dialysis against PBS. |
| Storage | Maintain refrigerated at 2-8°C for up to 2 weeks. For long term storage store at -20°C in small aliquots to prevent freeze-thaw cycles |
| Note | For research use only |
| Isotype | Rabbit IgG |
| Clonality | Polyclonal |
| MW | 21057 |
| Uniprot ID | P30086 |
| NCBI | NP_002558.1 |
| Dilution Range | WB: 1:1000, IHC-P: 1:50-100 |
| Expiration Date | 12 months from date of receipt. |



Western blot analysis of in 293 cell lin...



Western blot analysis of in mouse NIH-3T...