
Product Datasheet

Anterior Gradient 2/AGR2 Antibody (orb389446)

Description

Anterior Gradient 2/AGR2 Antibody

Species/Host

Rabbit

Reactivity

Human, Mouse, Rat

Conjugation

Unconjugated

Tested Applications

FC, IHC, WB

Immunogen

E.coli-derived human Anterior Gradient 2 recombinant protein (Position: R21-L175). Human Anterior Gradient 2 shares 93.5% amino acid (aa) sequence identity with mouse Anterior Gradient 2.

Form/Appearance

Lyophilized

Concentration

Adding 0.2 ml of distilled water will yield a concentration of 500 µg/ml.

Storage

Store at -20°C for one year from date of receipt. After reconstitution, at 4°C for one month. It can also be aliquotted and stored frozen at -20°C for six months. Avoid repeated freeze-thaw cycles.

Note

For research use only

Application notes

Tested Species: In-house tested species with positive results. By Heat: Boiling the paraffin sections in 10mM citrate buffer, pH6.0, for 20mins is required for the staining of formalin/paraffin sections. Other applications have not been tested. Optimal dilutions should be determined by end users. Add 0.2ml of distilled water will yield a concentration of 500ug/ml.

Isotype

Rabbit IgG

Clonality

Polyclonal

MW

19979 MW

Uniprot ID

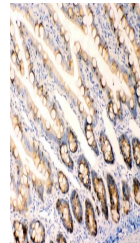
O95994

Expiration Date

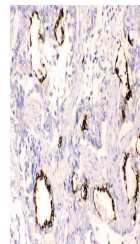
12 months from date of receipt.



WB analysis of Anterior Gradient 2 using...



IHC analysis of Anterior Gradient 2 usin...



IHC analysis of Anterior Gradient 2 usin...