
Product Datasheet

Nucleoside phosphorylase/PNP Antibody (orb389429)

Description

Nucleoside phosphorylase/PNP Antibody

Species/Host

Rabbit

Reactivity

Human, Mouse, Rat

Conjugation

Unconjugated

Tested

FC, IHC, WB

Applications
Immunogen

A synthetic peptide corresponding to a sequence in the middle region of human PNP (161-189aa AMSDAYDRTMRQRALSTWKQMGEQRELQE), different from the related mouse sequence by six amino acids, and from the related rat sequence by five amino acids.

Form/Appearance

Lyophilized

Concentration

Adding 0.2 ml of distilled water will yield a concentration of 500 µg/ml.

Storage

Store at -20°C for one year from date of receipt. After reconstitution, at 4°C for one month. It can also be aliquotted and stored frozen at -20°C for six months. Avoid repeated freeze-thaw cycles.

Note

For research use only

Application notes

Add 0.2ml of distilled water will yield a concentration of 500ug/ml.

Isotype

Rabbit IgG

Clonality

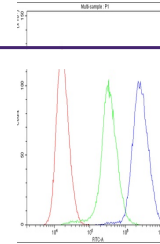
Polyclonal

MW

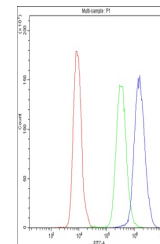
32118 MW

Uniprot ID
[P00491](#)
Expiration Date

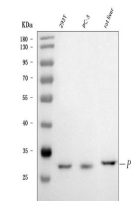
12 months from date of receipt.



Flow Cytometry analysis of U251 cells us...



Flow Cytometry analysis of U937 cells us...



WB analysis of PNP using anti-PNP antibo...