
Product Datasheet

Mannose Phosphate Isomerase/MPI Antibody (orb389425)

Description

Mannose Phosphate Isomerase/MPI Antibody


Species/Host

Rabbit

Reactivity

Human, Mouse, Rat

Conjugation

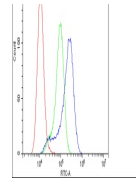
Unconjugated

Tested

FC, IHC, WB

Applications
Immunogen

E. coli-derived human MPI recombinant protein (Position: A2-K99). Human MPI shares 88.8% and 86.7% amino acid (aa) sequence identity with mouse and rat MPI, respectively.



Flow Cytometry analysis of A549 cells us...

Form/Appearance

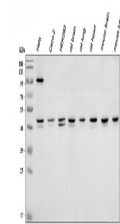
Lyophilized

Concentration

Adding 0.2 ml of distilled water will yield a concentration of 500 µg/ml.

Storage

Store at -20°C for one year from date of receipt. After reconstitution, at 4°C for one month. It can also be aliquotted and stored frozen at -20°C for six months. Avoid repeated freeze-thaw cycles.



WB analysis of MPI using anti-MPI antibo...

Note

For research use only

Application notes

Add 0.2ml of distilled water will yield a concentration of 500ug/ml.

Isotype

Rabbit IgG

Clonality

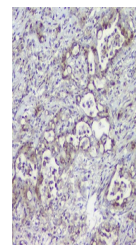
Polyclonal

MW

46656 MW

Uniprot ID
[P34949](https://www.uniprot.org/protein/P34949)
Expiration Date

12 months from date of receipt.



IHC analysis of MPI using anti-MPI antib...