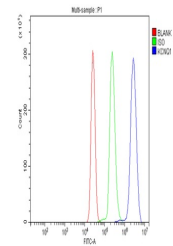


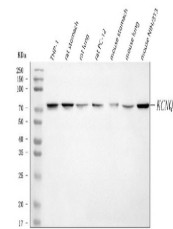
Product Datasheet

KCNQ1 Antibody (orb389421)

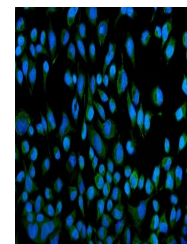
Description	KCNQ1 Antibody
Species/Host	Rabbit
Reactivity	Human, Mouse, Rat
Conjugation	Unconjugated
Tested Applications	FC, ICC, IF, IHC, WB
Immunogen	A synthetic peptide corresponding to a sequence in the middle region of human KCNQ1 (356-397aa QKQQRQKHFNRQIPAAASLIQTAWRCYAAENPDSSTWKIYIR), different from the related mouse sequence by two amino acids, and from the related rat sequence by one amino acid.
Form/Appearance	Lyophilized
Concentration	Adding 0.2 ml of distilled water will yield a concentration of 500 µg/ml.
Storage	Store at -20°C for one year from date of receipt. After reconstitution, at 4°C for one month. It can also be aliquotted and stored frozen at -20°C for six months. Avoid repeated freeze-thaw cycles.
Note	For research use only
Application notes	Tested Species: In-house tested species with positive results. Other applications have not been tested. Optimal dilutions should be determined by end users. . Add 0.2ml of distilled water will yield a concentration of 500ug/ml.
Isotype	Rabbit IgG
Clonality	Polyclonal
MW	74699 MW
Uniprot ID	P51787
Expiration Date	12 months from date of receipt.



Flow Cytometry analysis of U937 cells us...



WB analysis of KCNQ1 using anti-KCNQ1 an...



IF analysis of KCNQ1 using anti-KCNQ1 an...