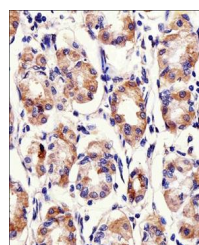
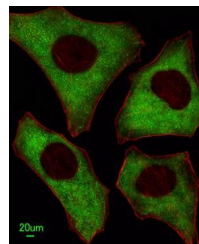


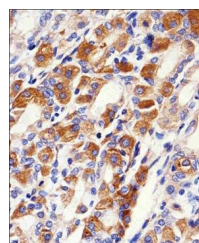
Product Datasheet

PACSIN2 antibody (orb38942)

Description	Purified rabbit polyclonal antibody.
Species/Host	Rabbit
Reactivity	Human, Mouse
Conjugation	Unconjugated
Tested Applications	IHC-P, WB
Immunogen	Synthetic Peptide
Target	PACSIN2
Form/Appearance	Purified polyclonal antibody supplied in PBS with 0.09% (W/V) sodium azide. This antibody is purified through a protein A column, followed by peptide affinity purification.
Storage	Maintain refrigerated at 2-8°C for up to 2 weeks. For long term storage store at -20°C in small aliquots to prevent freeze-thaw cycles
Note	For research use only
Isotype	Rabbit IgG
Clonality	Polyclonal
MW	55739
Uniprot ID	Q9UNF0
NCBI	NP_001171899.1 , NP_009160.2 , NP_001171900.1
Dilution Range	IF/ICC: 1:100, WB: 1:1000, IHC-P: 1:50-100
Expiration Date	12 months from date of receipt.



IHC-P staining of human stomach section ...



Immunohistochemical staining of human st...