
Product Datasheet

Calpastatin/CAST Antibody (orb389393)

Description

Calpastatin/CAST Antibody

Species/Host

Rabbit

Reactivity

Human

Conjugation

Unconjugated

Tested Applications

FC, ICC, IF, IHC, WB

Immunogen

A synthetic peptide corresponding to a sequence in the middle region of human Calpastatin (275-310aa QEKRRKVEKDTMSDQALEALSASLGRQAEPDLR), different from the related mouse sequence by fifteen amino acids, and from the related rat sequence by eleven amino acids.

Form/Appearance

Lyophilized

Concentration

Adding 0.2 ml of distilled water will yield a concentration of 500 µg/ml.

Storage

Store at -20°C for one year from date of receipt. After reconstitution, at 4°C for one month. It can also be aliquotted and stored frozen at -20°C for six months. Avoid repeated freeze-thaw cycles.

Note

For research use only

Application notes

Tested Species: In-house tested species with positive results.
 By Heat: Boiling the paraffin sections in 10mM citrate buffer, pH6.0, for 20mins is required for the staining of formalin/paraffin sections. Other applications have not been tested. Optimal dilutions should be determined by end users.
 Add 0.2ml of distilled water will yield a concentration of 500ug/ml.

Isotype

Rabbit IgG

Clonality

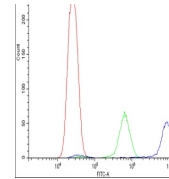
Polyclonal

MW

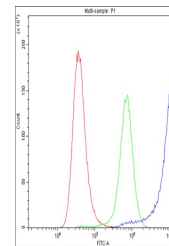
76573 MW

Uniprot ID
P20810
Expiration Date

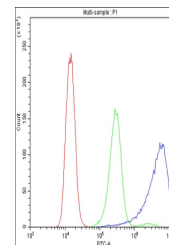
12 months from date of receipt.



Flow Cytometry analysis of U20S cells us...



Flow Cytometry analysis of A549 cells us...



Flow Cytometry analysis of A431 cells us...