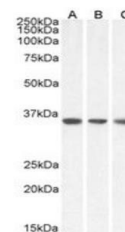


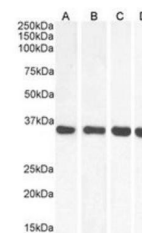
Product Datasheet

MDH2 antibody (orb389375)

Description	Goat polyclonal antibody to MDH2
Species/Host	Goat
Reactivity	Bovine, Human, Mouse, Porcine, Rat
Conjugation	Unconjugated
Tested Applications	ELISA, IHC, WB
Target	MDH2
Preservatives	Supplied at 0.5 mg/ml in Tris saline, 0.02% sodium azide, pH 7.3 with 0.5% bovine serum albumin. Aliquot and store at -20°C. Minimize freezing and thawing.
Storage	Aliquot and store at -20°C. Minimize freezing and thawing.
Note	For research use only
Application notes	WB: Approx 35kDa band observed in lysates of cell lines HeLa, HepG2 and NIH3T3 (calculated MW of 35.5kDa according to Human NP_005909.2 and 35.6kDa according to Mouse NP_032643.2).
Protein Sequence	TRDDLNTNAT
Clonality	Polyclonal
MW	35.5
Entrez	4191
Dilution Range	ELISA: 1:8000, WB: 0.01-0.03 µg/ml, IHC-P: 5 µg/ml
Expiration Date	12 months from date of receipt.



Western blot analysis of HeLa (Lane 1), ...



Western blot analysis of Human, Mouse, R...