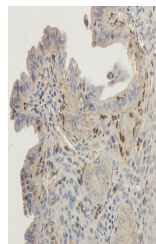


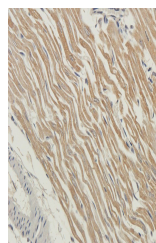
Product Datasheet

RYR2 antibody (orb389351)

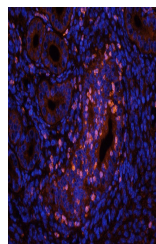
Description	RYR2 antibody
Species/Host	Rabbit
Reactivity	Guinea pig, Mouse
Conjugation	Unconjugated
Tested Applications	ICC, IF, IHC-P
Immunogen	KLH conjugated synthetic peptide derived from human RYR2. Please contact us for the exact immunogen sequence. The peptide is available as orb14288.
Target	RYR2
Form/Appearance	10 mM PBS, 0.02% sodium azide
Concentration	- 100 µg (in 200 µl): 0.5 mg/ml- 200 µg (in 400 µl): 0.5 mg/ml
Storage	Store at 4°C for up to two weeks. For long term storage, aliquot and store at -20°C, avoid freeze/thaw cycles.
Note	For research use only
Isotype	IgG
Clonality	Polyclonal
Purity	Polyclonal antibodies are purified by peptide affinity chromatography
Uniprot ID	E9Q401
NCBI	001026
Dilution Range	IHC-P: 1:50-500, IF/ICC: 1:50-500
Expiration Date	12 months from date of receipt.



IHC-P image of mouse ovary tissue using ...



IHC-P staining of guinea pig heart tissu...



IF image of mouse ovary tissue using ant...